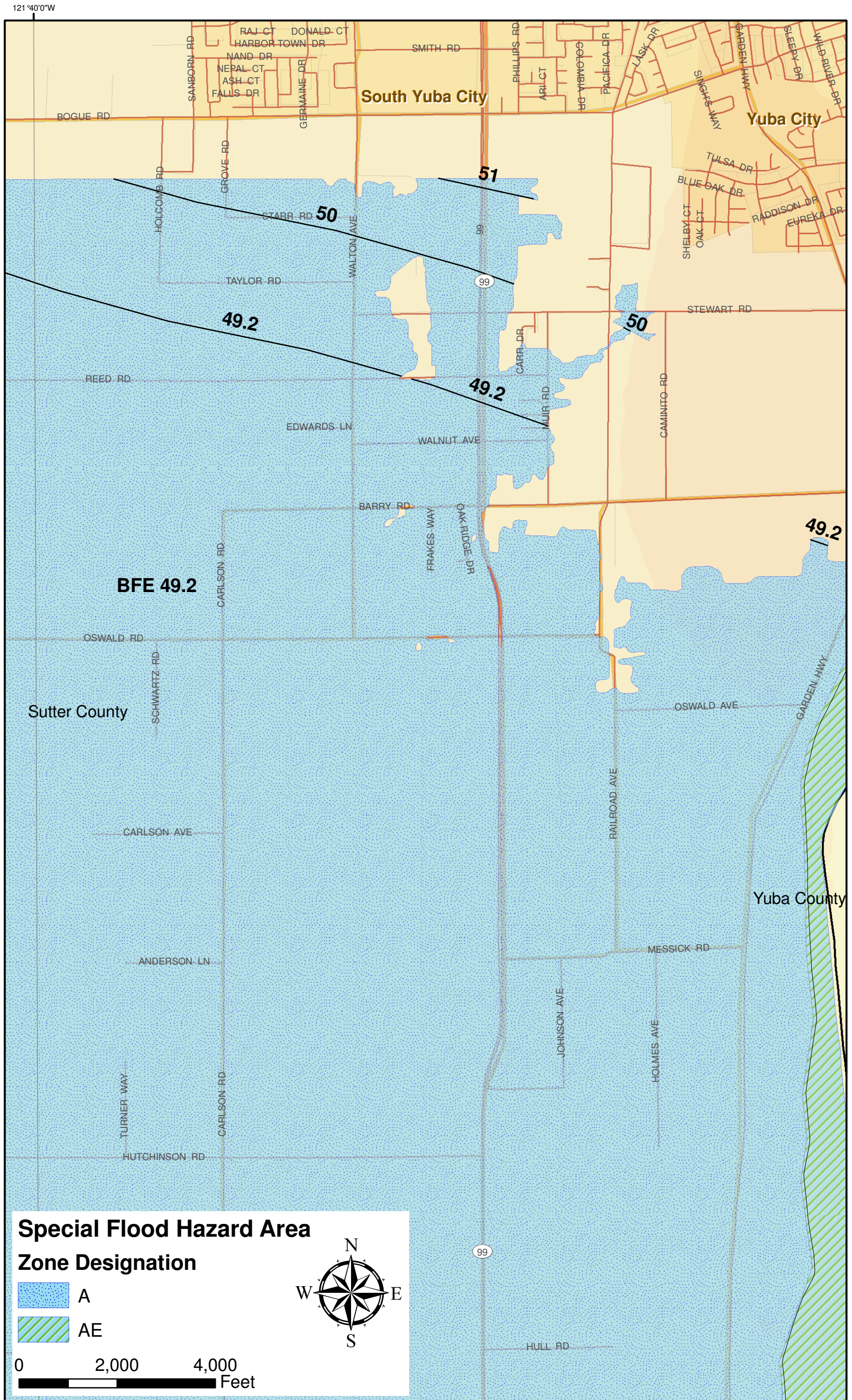


# Sutter Basin Base Flood Elevation Map



121°40'0"W  
 Notes to Users:  
 Contour interval on this map equals 1 foot.  
 Base flood elevations shown on this map are National Geodetic Vertical Datum of 1929 (NGVD 29). These flood elevations must be compared to structure and ground elevations referenced to the same vertical datum.  
 The projection used in the preparation of this map was NAD 1983 Stateplane California Zone II.  
 To obtain current elevation, description, and/or location information for benchmarks please contact the Information Services Branch of the National Geodetic Survey at (301) 713-3242, or visit its website at <http://www.ngs.noaa.gov/>.

For information regarding the conversion between the National Geodetic Vertical Datum of 1929 and the North American Vertical Datum of 1988, visit the National Geodetic Survey website at <http://ngs.noaa.gov/> or contact the National Geodetic Survey at the following address:  
 NGS Information Services  
 NOAA, NNGS12  
 National Geodetic Survey  
 SSMC-3, #9202  
 1315 East-West Highway  
 Silver Spring, MD 20910-3282

Boundaries of the flood elevations were interpolated from the United States Army Corps of Engineers (USACE) Updated 2006 Flo-2D Model created for the Sutter County Feasibility Study (2004).



**SUTTER COUNTY, CALIFORNIA**  
 February 13, 2009